



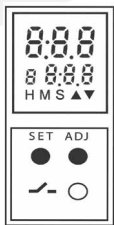
Timing Control Made Easy

7954 and 7957 Multi-function time relays

Versatile and easy to program

Programmable DIN Rail Time Relay

UL, cUL and CE, rated 



Digital accuracy, easy to read display



Screw terminals for up to 14AWG wire

Snap in DIN rail mounting



Form C SPDT 8 AMP relay



Output status indicator

MULTIPLE
timing ranges

up to **18**
selectable timing functions

Only 17mm wide

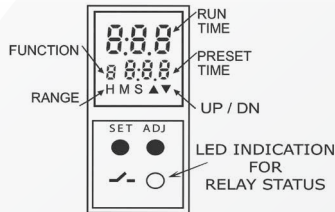
Trumeter's new range of digital time relays offer 8 or 18 operating modes, easily configured on the 3 digit LCD display: a wide range of 0.1s - 999Hr to suit all applications; a clear indication of the relay status via the front panel LED; can accept a wide range of operating voltages for most installations. The keylock feature means settings cannot be tampered with, for 100% reliable operation.

Key Features

Features

- Compact 17.5mm wide DIN rail mountable
- 3 digit LCD for easy programming and run time indication
- Tamper proof with key lock feature
- Wide timing range: 0.1s - 999Hr
- Multi-function: 8 (7954) or 18 (7957) selectable operating modes
- Universal Voltage: 24 - 240VAC/VDC
- Option to select up/down timing
- CE, UL & cUL approved
- 8 AMP Form C (SPDT) Relay outputs

Programmable:



- Preset Time: The Timer Duration selected by the user
- Run Time: In Down counting ▼ mode it indicates the time remaining, while in Up counting ▲ mode indicates the elapsed time.
- Default Mode: Down counting ▼
- Up/Down ▼▲ blinks during the Timer Duration (T)

Specifications:

- Input voltage range
- Relay Capability
- Temp range
- Time ranges

Part Numbers

7954 8 Functions
7957 18 Functions

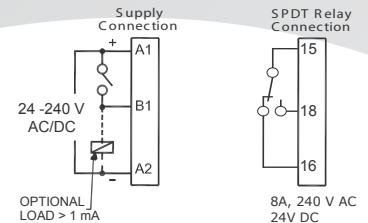
Operating modes

7957

- ON Delay
- Repeat Cycle OFF/ON
- Repeat Cycle ON/OFF
- Impulse on Power Up
- Accumulative Delay on Signal
- Accumulative Delay on Inverted Signal
- Accumulative Impulse on Signal
- Signal ON Delay
- Inverted Signal ON Delay
- Signal OFF Delay
- Impulse ON/OFF
- Signal OFF/ON
- Leading Edge Impulse 1
- Leading Edge Impulse 2
- Trailing Edge Impulse 1
- Trailing Edge Impulse 2
- Delayed Impulse
- Inverted Signal ON Delay (Type 2)

7954

- ON Delay
- Repeat Cycle OFF/ON
- Repeat Cycle ON/OFF
- Signal ON/OFF
- Signal OFF Delay
- Interval
- Signal OFF/ON
- One Shot Output



Easy To Program & Install

